

# CANINE BODY CONDITION SCORE (BCS)

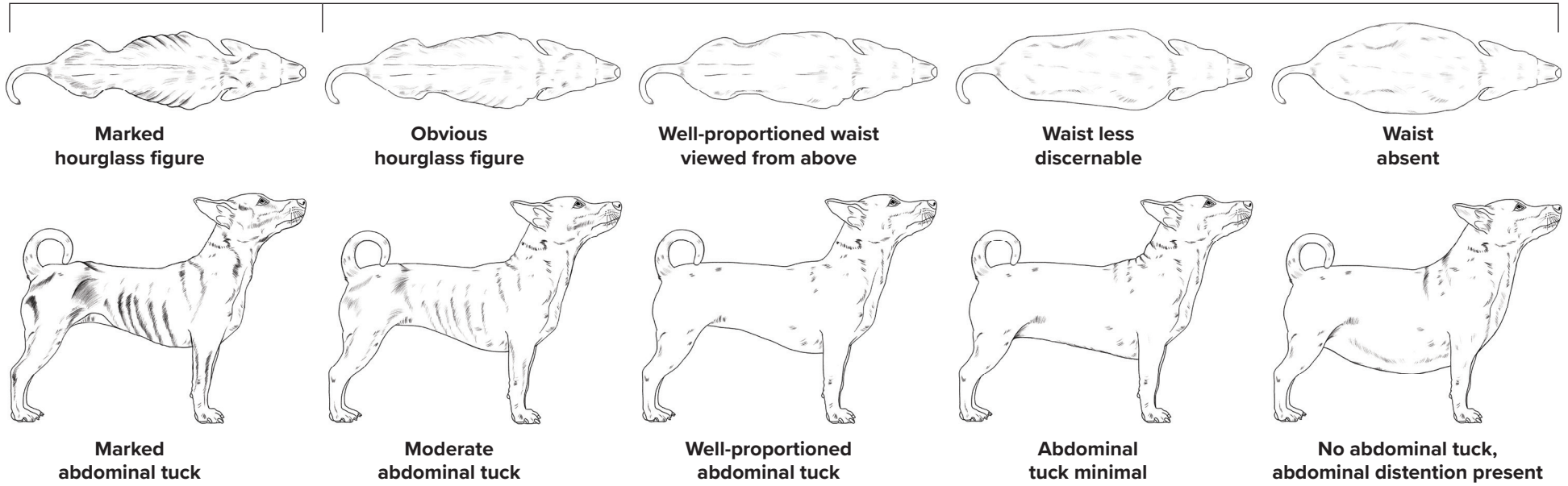
**UNDERWEIGHT**

**IDEAL WEIGHT**

**OVERWEIGHT**

Muscle wasting expected

Muscle mass dependent on age, activity level, and overall health



**Marked hourglass figure**

**Obvious hourglass figure**

**Well-proportioned waist viewed from above**

**Waist less discernable**

**Waist absent**

**Marked abdominal tuck**

**Moderate abdominal tuck**

**Well-proportioned abdominal tuck**

**Abdominal tuck minimal**

**No abdominal tuck, abdominal distention present**

1

2

3

4

5

6

7

8

9

Ribs visible from a distance under shorthair, no palpable body fat

Ribs visible under shorthair, no palpable fat

Ribs may be visible under shorthair, no palpable fat

Ribs minimally visible, easy to palpate with minimal fat cover

Ribs not visible, easy to palpate with minimal fat covering

Ribs palpable under mild fat covering

Ribs palpable with difficulty under moderate fat covering

Ribs palpable only with significant pressure under marked fat deposits

Ribs not palpable under marked fat deposits

Mild fat deposits over lumbar area and tail base

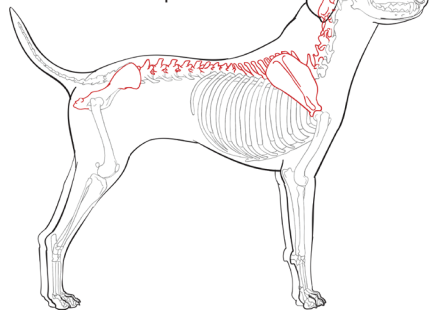
Moderate fat deposits over lumbar area and tail base

Marked fat deposit over spine including the neck and tail base

## MUSCLE CONDITION SCORE (MCS)

Physical assessment of patient's muscle mass

Palpated over spine, scapula, skull and pelvis

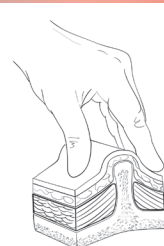
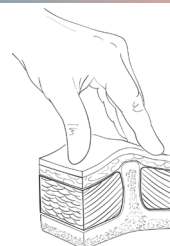
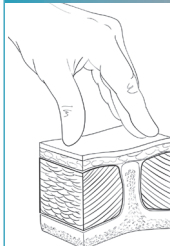


**NORMAL** muscle mass

**MILD** muscle loss

**MODERATE** muscle loss

**SEVERE** muscle loss



The 2021 AAHA Nutrition and Weight Management Guidelines for Dogs and Cats are available at [aaha.org/nutrition](http://aaha.org/nutrition).

©AAHA. Images ©Lauren D. Sawchyn, MSMI, DVM, CMI and AAHA/Sadie Lewandowski



# FELINE BODY CONDITION SCORE (BCS)

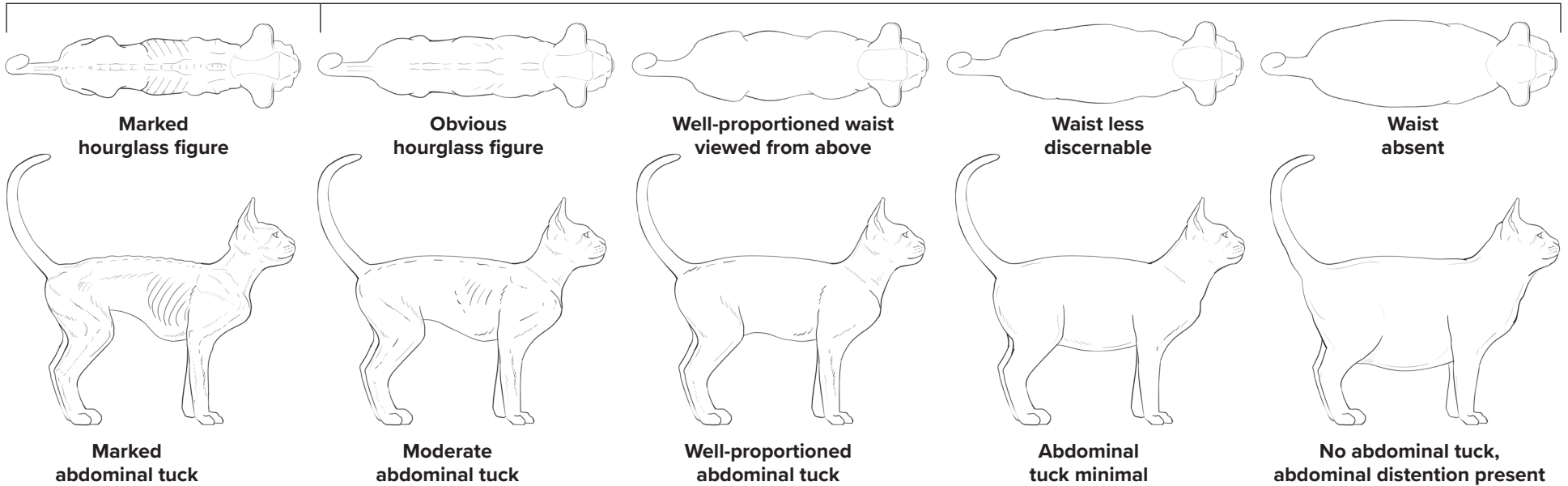
**UNDERWEIGHT**

**IDEAL WEIGHT**

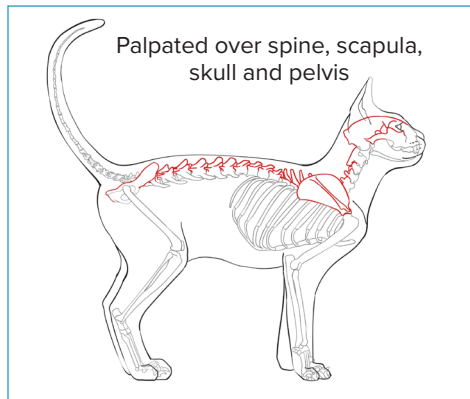
**OVERWEIGHT**

Muscle wasting expected

Muscle mass dependent on age, activity level, and overall health

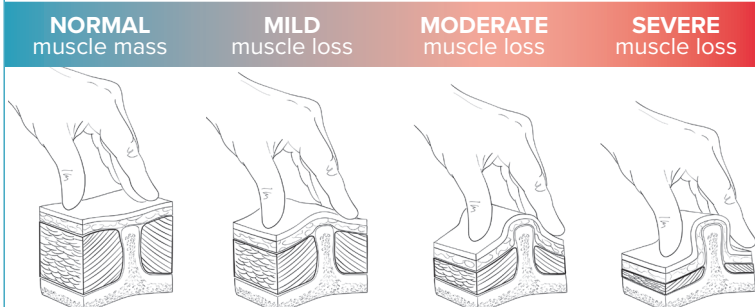


1	2	3	4	5	6	7	8	9
Ribs visible from a distance under shorthair, no palpable body fat	Ribs visible under shorthair, no palpable fat	Ribs may be visible under shorthair, no palpable fat	Ribs minimally visible, easy to palpate with minimal fat cover	Ribs not visible, easy to palpate with minimal fat covering	Ribs palpable under mild fat covering	Ribs palpable with difficulty under moderate fat covering	Ribs palpable only with significant pressure under marked fat deposits	Ribs not palpable under marked fat deposits



## MUSCLE CONDITION SCORE (MCS)

Physical assessment of patient's muscle mass



The 2021 AAHA Nutrition and Weight Management Guidelines for Dogs and Cats are available at [aaha.org/nutrition](http://aaha.org/nutrition).

©AAHA. Images ©Lauren D. Sawchyn, MSMI, DVM, CMI

